

# PARTS LIST

## CAUTION

- The parts identified by the  $\triangle$  symbol are important for the safety . Whenever replacing these parts, be sure to use specified ones to secure the safety .
- The parts not indicated in this Parts List and those which are filled with lines --- in the Parts No. columns will not be supplied .
- P. W. Board Ass'y will not be supplied, but those which are filled with the Parts No. in the Parts No. columns will be supplied .

## ABBREVIATIONS OF RESISTORS, CAPACITORS AND TOLERANCES

RESISTORS		CAPACITORS	
C R	Carbon Resistor	C CAP.	Ceramic Capacitor
F R	Fusible Resistor	E CAP.	Electrolytic Capacitor
P R	Plate Resistor	M CAP.	Mylar Capacitor
V R	Variable Resistor	CH CAP.	Chip Capacitor
HV R	High Voltage Resistor	HV CAP.	High Voltage Capacitor
MF R	Metal Film Resistor	MF CAP.	Metalized Film Capacitor
MG R	Metal Glazed Resistor	MM CAP.	Metalized Mylar Capacitor
MP R	Metal Plate Resistor	MP CAP.	Metalized Polystyrol Capacitor
OM R	Metal Oxide Film Resistor	PP CAP.	Polypropylene Capacitor
CMF R	Coating Metal Film Resistor	PS CAP.	Polystyrol Capacitor
UNF R	Non-Flammable Resistor	TF CAP.	Thin Film Capacitor
CH V R	Chip Variable Resistor	MPP CAP.	Metalized Polypropylene Capacitor
CH MG R	Chip Metal Glazed Resistor	TAN. CAP.	Tantalum Capacitor
COMP. R	Composition Resistor	CH C CAP.	Chip Ceramic Capacitor
LPTC R	Linear Positive Temperature Coefficient Resistor	BP E CAP.	Bi-Polar Electrolytic Capacitor
		CH AL E CAP.	Chip Aluminum Electrolytic Capacitor
		CH AL BP CAP.	Chip Aluminum Bi-Polar Capacitor
		CH TAN. E CAP.	Chip Tantalum Electrolytic Capacitor
		CH AL BP E CAP.	Chip Tantalum Bi-Polar Electrolytic Capacitor

RESISTORS									
F	G	J	K	M	N	R	H	Z	P
±1%	±2%	±5%	±10%	±20%	±30%	+30% -10%	+50% -10%	+80% -20%	+100% 0%

CONTENTS

USING P.W. BOARD & REMOTE CONTROL UNIT ..... 43

EXPLODED VIEW PARTS LIST -I ..... 43

EXPLODED VIEW -I ..... 43

EXPLODED VIEW PARTS LIST -II ..... 44

EXPLODED VIEW -II ..... 45

PRINTED WIRING BOARD PARTS LIST

    MAIN PW BOARD ASS'Y ..... 46

    CRT SOCKET PW BOARD ASS'Y ..... 50

    FRONT CONTROL PW BOARD ASS'Y ..... 52

REMOTE CONTROL UNIT PARTS LIST ..... 53

PACKING ..... 54

PACKING PARTS LIST ..... 54

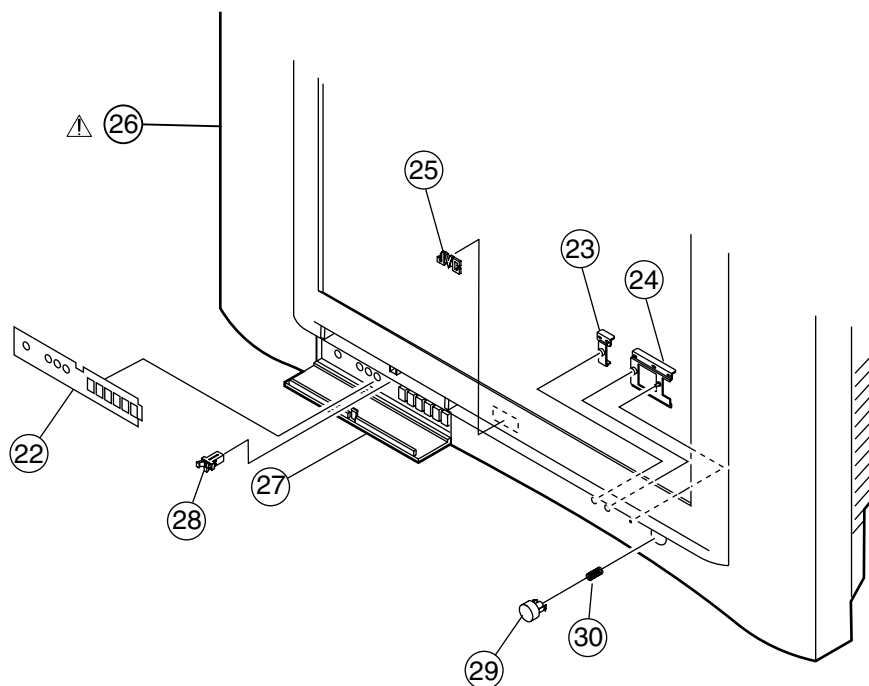
## USING P.W. BOARD & REMOTE CONTROL UNIT

P.W.B ASS'Y	Model	AV-29WS3/M
MAIN PWB		SCH-1107A-H2
CRT SOCKET PWB		SCH-3005A-H2
FRONT CONTROL PWB		SCH-8004A-H2
REMOTE CONTROL UNIT		RM-C1010-1H

## EXPLODED VIEW PARTS LIST -I

△ Ref.No.	Part No.	Part Name	Description	Local
22	GG20028-001A-H	OPERATION SHEET		
23	GG30050-001B-H	REMOCON LENS		
24	GG30049-001B-H	LED LENS		
25	LC41037-003A-H	JVC MARK		
△ 26	GG10189-001A-H	FRONT CABINET ASS'Y	Inc. No. 27, 28, 29, 30	
27	GG20027-001B-H	DOOR		
28	CM48229-00A-C	DOOR LATCH		
29	GG30048-001B-H	POWER KNOB		
30	CM35235-003-H	SPRING		

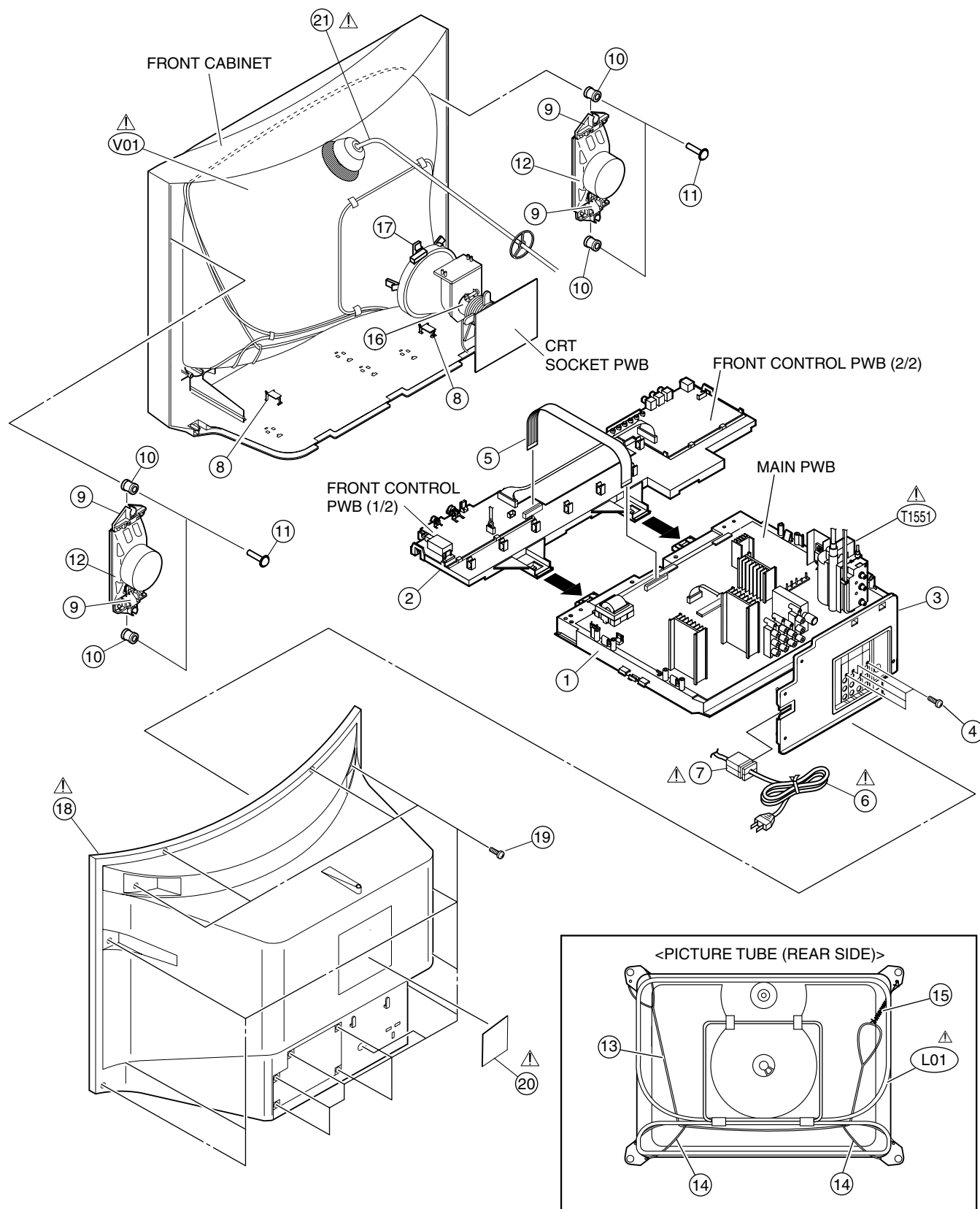
## EXPLODED VIEW -I



## EXPLODED VIEW PARTS LIST -II

△ Ref.No.	Part No.	Part Name	Description	Local
△ V01	A68QCU257X75K	PICTURE TUBE (ITC)	Inc. DEF YOKE	
△ L01	QQW0150-001	DEG COIL		
△ T1551	QQH0139-001	FBT	Not including ANODE WIRE ASS'Y	
1	LC11061-001A-H	CHASSIS BASE		
2	LC11062-001D-H	CONTROL BASE		
3	LC11064-001B-H	AV TERMINAL BOARD		
4	QYSBSF3012M	TAPPING SCREW	(X4)	
5	CHFD125-18BD	FFC WIRE		
△ 6	QMPR340-165-K2	POWER CORD		
△ 7	CM23167-A01-H	POWER CORD CLAMP		
8	LC30103-001B-H	CHASSIS ADAPTER	(X2)	
9	GG20023-001B-H	SP HOLDER	(X4)	
10	LC40226-003A-H	SPACER	(X4)	
11	LC40317-002A-H	TAPPING SCREW	(X4)	
12	QAS0114-001	SPEAKER	(X2)	
13	WJY0018-001A	BRAIDED ASS'Y		
14	CHGB0017-0C	BRAIDED ASS'Y (SUB)	(X2)	
15	A48457-3-H	SPRING		
16	CE42568-00A	PC MAGNET		
17	CE40764-00A	WEDGE ASS'Y	(X4)	
△ 18	GG10192-002B-H	REAR COVER		
19	QYSBSFG4016Z	TAPPING SCREW	(X16)	
△ 20	GG20024-001B-H	RATING LABEL		
△ 21	QNZ0369-001	ANODE WIRE ASS'Y		

## EXPLODED VIEW -II






# PRINTED WIRING BOARD PARTS LIST

## MAIN PW BOARD ASS'Y (SCH-1107A-H2)

△ Symbol No.	Part No.	Part Name	Description	Local	△ Symbol No.	Part No.	Part Name	Description	Local
<b>RESISTOR</b>					<b>RESISTOR</b>				
R1001	NRSA63J-221X	MG R	220Ω 1/16W J		△ R1529	QRZ9021-1R0	F R	1Ω 1W J	
R1002	NRSA63J-221X	MG R	220Ω 1/16W J		R1531	NRSA63J-182X	MG R	1.8kΩ 1/16W J	
R1003	NRSA63J-392X	MG R	3.9kΩ 1/16W J		△ R1532	QRZ9017-4R7	F R	4.7Ω 1/4W J	
R1004	NRSA63J-221X	MG R	220Ω 1/16W J		R1541	QRE121J-124Y	C R	120kΩ 1/2W J	
R1005	NRSA63J-273X	MG R	27kΩ 1/16W J		R1542	QRE121J-124Y	C R	120kΩ 1/2W J	
R1006	NRSA63J-750X	MG R	75Ω 1/16W J		R1543	QRE121J-471Y	C R	470Ω 1/2W J	
R1101	NRSA63J-100X	MG R	10Ω 1/16W J		R1545	QRE121J-220Y	C R	22Ω 1/2W J	
R1102	NRSA63J-682X	MG R	6.8kΩ 1/16W J		R1546	QRE121J-822Y	C R	8.2kΩ 1/2W J	
R1103	NRSA63J-272X	MG R	2.7kΩ 1/16W J		△ R1547	QRZ9011-4R7	F R	4.7Ω 1/2W J	
R1104	NRSA63J-181X	MG R	180Ω 1/16W J		R1561	QRL029J-220	OM R	22Ω 2W J	
R1105	NRSA63J-220X	MG R	22Ω 1/16W J		R1562	QRE121J-123Y	C R	12kΩ 1/2W J	
R1106	NRSA63J-101X	MG R	100Ω 1/16W J		R1563	QRZ0056-103Z	COMP R	10kΩ 1/2W K	
R1107	NRSA63J-472X	MG R	4.7kΩ 1/16W J		R1591	QRA14CF-1202Y	CMF R	12kΩ 1/4W F	
R1108	NRSA63J-222X	MG R	2.2kΩ 1/16W J		R1592	QRZ0225-2R2	UNF R	2.2Ω 2W	
R1109	NRSA63J-222X	MG R	2.2kΩ 1/16W J		R1593	NRSA02F-332X	MG R	3.3kΩ 1/10W F	
R1110	NRSA63J-222X	MG R	2.2kΩ 1/16W J		R1594	QRE121J-183Y	C R	18kΩ 1/2W J	
R1111	NRSA63J-102X	MG R	1kΩ 1/16W J		R1595	NRSA63J-222X	MG R	2.2kΩ 1/16W J	
R1113	NRSA63J-102X	MG R	1kΩ 1/16W J		R1602	NRSA63J-271X	MG R	270Ω 1/16W J	
R1114	NRSA63J-102X	MG R	1kΩ 1/16W J		R1603	NRSA63J-101X	MG R	100Ω 1/16W J	
R1115	NRSA63J-471X	MG R	470Ω 1/16W J		R1604	NRSA63J-101X	MG R	100Ω 1/16W J	
R1117	NRSA63J-103X	MG R	10kΩ 1/16W J		R1621	NRSA63J-0R0X	MG R	0.0Ω 1/16W J	
R1150	NRSA63J-331X	MG R	330Ω 1/16W J		R1622	NRSA63J-0R0X	MG R	0.0Ω 1/16W J	
R1151	NRSA63J-222X	MG R	2.2kΩ 1/16W J		R1623	NRSA63J-473X	MG R	47kΩ 1/16W J	
R1152	NRSA63J-121X	MG R	120Ω 1/16W J		R1624	NRSA63J-101X	MG R	100Ω 1/16W J	
R1153	NRSA63J-122X	MG R	1.2kΩ 1/16W J		R1625	NRSA63J-101X	MG R	100Ω 1/16W J	
R1154	NRSA63J-181X	MG R	180Ω 1/16W J		R1627	NRSA63J-102X	MG R	1kΩ 1/16W J	
R1301	NRSA63J-222X	MG R	2.2kΩ 1/16W J		R1628	NRSA63J-103X	MG R	10kΩ 1/16W J	
R1302	NRSA63J-222X	MG R	2.2kΩ 1/16W J		R1629	NRSA63J-102X	MG R	1kΩ 1/16W J	
R1303	NRSA63J-562X	MG R	5.6kΩ 1/16W J		R1630	NRSA63J-102X	MG R	1kΩ 1/16W J	
R1304	NRSA63J-222X	MG R	2.2kΩ 1/16W J		R1650	NRSA63J-103X	MG R	10kΩ 1/16W J	
R1305	NRSA63J-222X	MG R	2.2kΩ 1/16W J		R1651	NRSA63J-103X	MG R	10kΩ 1/16W J	
R1306	NRSA63J-562X	MG R	5.6kΩ 1/16W J		R1652	NRSA63J-103X	MG R	10kΩ 1/16W J	
R1307	NRSA63J-103X	MG R	10kΩ 1/16W J		R1653	NRSA63J-104X	MG R	100kΩ 1/16W J	
R1308	NRSA63J-101X	MG R	100Ω 1/16W J		R1654	NRSA63J-103X	MG R	10kΩ 1/16W J	
R1309	NRSA63J-473X	MG R	47kΩ 1/16W J		R1655	NRSA63J-104X	MG R	100kΩ 1/16W J	
R1310	NRSA63J-473X	MG R	47kΩ 1/16W J		R1656	QRE121J-2R2Y	C R	2.2Ω 1/2W J	
R1311	NRSA63J-123X	MG R	12kΩ 1/16W J		R1657	QRE121J-2R2Y	C R	2.2Ω 1/2W J	
R1317	QRL029J-101	OM R	100Ω 2W J		R1660	NRSA63J-103X	MG R	10kΩ 1/16W J	
R1401	NRSA63J-123X	MG R	12kΩ 1/16W J		R1661	NRSA63J-683X	MG R	68kΩ 1/16W J	
R1403	NRSA63J-0R0X	MG R	0.0Ω 1/16W J		R1662	NRSA63J-333X	MG R	33kΩ 1/16W J	
R1405	NRSA63J-682X	MG R	6.8kΩ 1/16W J		R1663	NRSA63J-103X	MG R	10kΩ 1/16W J	
R1406	NRSA63J-472X	MG R	4.7kΩ 1/16W J		R1664	NRSA63J-222X	MG R	2.2kΩ 1/16W J	
R1408	NRSA63J-682X	MG R	6.8kΩ 1/16W J		R1688	NRSA63J-273X	MG R	27kΩ 1/16W J	
R1410	NRSA63J-472X	MG R	4.7kΩ 1/16W J		R1690	NRSA63J-104X	MG R	100kΩ 1/16W J	
R1411	QRG01GJ-221	OM R	220Ω 1W J		R1691	NRSA63J-102X	MG R	1kΩ 1/16W J	
R1412	QRE121J-1R0Y	C R	1Ω 1/2W J		R1695	NRSA63J-153X	MG R	15kΩ 1/16W J	
R1413	QRX01GJ-1R2	MF R	1.2Ω 1W J		R1696	NRSA63J-0R0X	MG R	0.0Ω 1/16W J	
R1414	QRE121J-2R2Y	C R	2.2Ω 1/2W J		R1701	NRSA63J-101X	MG R	100Ω 1/16W J	
R1425	NRSA63J-153X	MG R	15kΩ 1/16W J		R1702	NRSA63J-101X	MG R	100Ω 1/16W J	
R1478	NRSA63J-101X	MG R	100Ω 1/16W J		R1703	NRSA63J-101X	MG R	100Ω 1/16W J	
R1479	NRSA63J-101X	MG R	100Ω 1/16W J		R1704	NRSA63J-102X	MG R	1kΩ 1/16W J	
R1480	QRE121J-681Y	C R	680Ω 1/2W J		R1705	NRSA63J-102X	MG R	1kΩ 1/16W J	
R1481	NRSA63J-223X	MG R	22kΩ 1/16W J		R1706	NRSA63J-102X	MG R	1kΩ 1/16W J	
R1482	NRSA63J-562X	MG R	5.6kΩ 1/16W J		R1707	NRSA63J-472X	MG R	4.7kΩ 1/16W J	
R1483	NRSA63J-823X	MG R	82kΩ 1/16W J		R1708	NRSA63J-472X	MG R	4.7kΩ 1/16W J	
R1484	NRSA63J-562X	MG R	5.6kΩ 1/16W J		R1709	NRSA63J-472X	MG R	4.7kΩ 1/16W J	
R1485	NRSA63J-123X	MG R	12kΩ 1/16W J		R1710	NRSA63J-472X	MG R	4.7kΩ 1/16W J	
R1486	NRSA63J-272X	MG R	2.7kΩ 1/16W J		R1711	NRSA63J-101X	MG R	100Ω 1/16W J	
R1487	NRSA63J-333X	MG R	33kΩ 1/16W J		R1712	NRSA63J-101X	MG R	100Ω 1/16W J	
R1489	NRSA63J-122X	MG R	1.2kΩ 1/16W J		R1713	NRSA63J-101X	MG R	100Ω 1/16W J	
R1490	NRSA63J-102X	MG R	1kΩ 1/16W J		R1714	NRSA63J-101X	MG R	100Ω 1/16W J	
R1491	NRSA63J-562X	MG R	5.6kΩ 1/16W J		R1715	NRSA63J-101X	MG R	100Ω 1/16W J	
R1492	NRSA63J-822X	MG R	8.2kΩ 1/16W J		R1716	NRSA63J-103X	MG R	10kΩ 1/16W J	
R1493	QRE121J-223Y	C R	22kΩ 1/2W J		R1717	NRSA63J-103X	MG R	10kΩ 1/16W J	
R1494	QRL039J-330	OM R	33Ω 3W J		R1718	NRSA63J-221X	MG R	220Ω 1/16W J	
R1521	NRSA63J-101X	MG R	100Ω 1/16W J		R1719	NRSA63J-221X	MG R	220Ω 1/16W J	
R1522	NRSA63J-102X	MG R	1kΩ 1/16W J		R1720	NRSA63J-102X	MG R	1kΩ 1/16W J	
R1523	QRL039J-151	OM R	150Ω 3W J		R1721	NRSA63J-221X	MG R	220Ω 1/16W J	
R1524	QRL039J-151	OM R	150Ω 3W J		R1722	NRSA63J-221X	MG R	220Ω 1/16W J	
R1526	QRL029J-271	OM R	270Ω 2W J		R1723	NRSA63J-221X	MG R	220Ω 1/16W J	
R1527	QRL039J-103	OM R	10kΩ 3W J		R1724	NRSA63J-221X	MG R	220Ω 1/16W J	
△ R1528	QRZ9021-1R0	F R	1Ω 1W J		R1725	NRSA63J-103X	MG R	10kΩ 1/16W J	

△	Symbol No.	Part No.	Part Name	Description		Local
RESISTOR						
R1726		NRSA63J-472X	MG R	4.7kΩ	1/16W	J
R1727		NRSA63J-104X	MG R	100kΩ	1/16W	J
R1728		NRSA63J-103X	MG R	10kΩ	1/16W	J
R1730		NRSA63J-223X	MG R	22kΩ	1/16W	J
R1731		NRSA63J-101X	MG R	100Ω	1/16W	J
R1732		NRSA02F-393X	MG R	39kΩ	1/10W	F
R1733		NRSA63J-273X	MG R	27kΩ	1/16W	J
R1734		NRSA63J-391X	MG R	390Ω	1/16W	J
R1735		NRSA63J-104X	MG R	100kΩ	1/16W	J
R1736		NRSA63J-333X	MG R	33kΩ	1/16W	J
R1737		NRSA63J-272X	MG R	2.7kΩ	1/16W	J
R1738		NRSA63J-103X	MG R	10kΩ	1/16W	J
R1739		NRSA63J-101X	MG R	100Ω	1/16W	J
R1740		NRSA63J-101X	MG R	100Ω	1/16W	J
R1741		NRSA63J-101X	MG R	100Ω	1/16W	J
R1742		NRSA63J-0R0X	MG R	0.0Ω	1/16W	J
R1744		NRSA63J-561X	MG R	560Ω	1/16W	J
R1745		NRSA63J-105X	MG R	1MΩ	1/16W	J
R1746		NRSA63J-333X	MG R	33kΩ	1/16W	J
R1747		NRSA63J-103X	MG R	10kΩ	1/16W	J
R1748		NRSA02J-225X	MG R	2.2MΩ	1/10W	J
R1749		NRSA02J-185X	MG R	1.8MΩ	1/10W	J
R1750		NRSA63J-0R0X	MG R	0.0Ω	1/16W	J
R1755		NRSA63J-101X	MG R	100Ω	1/16W	J
R1756		NRSA63J-101X	MG R	100Ω	1/16W	J
R1757		NRSA63J-222X	MG R	2.2kΩ	1/16W	J
R1758		NRSA63J-222X	MG R	2.2kΩ	1/16W	J
R1790		NRSA63J-270X	MG R	27Ω	1/16W	J
R1801		NRSA63J-750X	MG R	75Ω	1/16W	J
R1802		NRSA63J-750X	MG R	75Ω	1/16W	J
R1803		NRSA63J-333X	MG R	33kΩ	1/16W	J
R1804		NRSA63J-750X	MG R	75Ω	1/16W	J
R1805		NRSA63J-750X	MG R	75Ω	1/16W	J
R1806		NRSA63J-750X	MG R	75Ω	1/16W	J
R1807		NRSA63J-750X	MG R	75Ω	1/16W	J
R1808		NRSA63J-823X	MG R	82kΩ	1/16W	J
R1809		NRSA63J-391X	MG R	390Ω	1/16W	J
R1810		NRSA63J-823X	MG R	82kΩ	1/16W	J
R1811		NRSA63J-391X	MG R	390Ω	1/16W	J
R1812		NRSA63J-104X	MG R	100kΩ	1/16W	J
R1813		NRSA63J-222X	MG R	2.2kΩ	1/16W	J
R1815		NRSA63J-101X	MG R	100Ω	1/16W	J
R1817		NRSA63J-101X	MG R	100Ω	1/16W	J
R1818		NRSA63J-222X	MG R	2.2kΩ	1/16W	J
R1819		NRSA63J-101X	MG R	100Ω	1/16W	J
R1820		NRSA63J-101X	MG R	100Ω	1/16W	J
R1821		NRSA63J-222X	MG R	2.2kΩ	1/16W	J
R1823		NRSA63J-101X	MG R	100Ω	1/16W	J
R1824		NRSA63J-222X	MG R	2.2kΩ	1/16W	J
R1826		NRSA63J-101X	MG R	100Ω	1/16W	J
R1829		NRSA63J-750X	MG R	75Ω	1/16W	J
R1830		NRSA63J-222X	MG R	2.2kΩ	1/16W	J
R1831		NRSA63J-222X	MG R	2.2kΩ	1/16W	J
R1832		NRSA63J-391X	MG R	390Ω	1/16W	J
R1833		NRSA63J-271X	MG R	270Ω	1/16W	J
R1834		NRSA63J-562X	MG R	5.6kΩ	1/16W	J
R1835		NRSA63J-562X	MG R	5.6kΩ	1/16W	J
R1836		NRSA63J-750X	MG R	75Ω	1/16W	J
R1837		NRSA63J-101X	MG R	100Ω	1/16W	J
R1838		QRK126J-121X	UNF R	120Ω	1/2W	J
R1839		QRE121J-221Y	C R	220Ω	1/2W	J
R1840		QRE121J-221Y	C R	220Ω	1/2W	J
R1841		NRSA63J-0R0X	MG R	0.0Ω	1/16W	J
R1842		NRSA63J-0R0X	MG R	0.0Ω	1/16W	J
R1843		NRSA63J-821X	MG R	820Ω	1/16W	J
R1844		NRSA63J-222X	MG R	2.2kΩ	1/16W	J
R1845		NRSA63J-102X	MG R	1kΩ	1/16W	J
R1846		NRSA63J-222X	MG R	2.2kΩ	1/16W	J
R1847		NRSA63J-103X	MG R	10kΩ	1/16W	J
R1848		NRSA63J-221X	MG R	220Ω	1/16W	J
R1849		NRSA63J-471X	MG R	470Ω	1/16W	J
R1850		QRE141J-0R0Y	C R	0.0Ω	1/4W	J

	Symbol No.	Part No.	Part Name	Description	Local
RESISTOR					
	R1880	NRSA63J-202X	MG R	2kΩ 1/16W	J
	R1881	NRSA63J-103X	MG R	10kΩ 1/16W	J
	R1882	NRSA63J-181X	MG R	180Ω 1/16W	J
	R1883	NRSA63J-471X	MG R	470Ω 1/16W	J
	R1902	QRF154K-2R2	UNF R	2.2Ω 15W	K
	R1903	QRL039J-393	OM R	39kΩ 3W	J
	R1904	QRE121J-221Y	C R	220Ω 1/2W	J
	R1905	QRM034J-R10	MP R	0.1Ω 3W	J
	R1906	QRE141J-1R5Y	C R	1.5Ω 1/4W	J
	R1908	NRSA63J-103X	MG R	10kΩ 1/16W	J
	R1911	QRE121J-152Y	C R	1.5kΩ 1/2W	J
	R1912	QRE121J-123Y	C R	12kΩ 1/2W	J
	R1913	QRZ9017-100	F R	10Ω 1/4W	J
	R1914	QRL039J-473	OM R	47kΩ 3W	J
	R1915	NRSA63J-823X	MG R	82kΩ 1/16W	J
	R1916	NRSA63J-154X	MG R	150kΩ 1/16W	J
	R1951	QRE121J-223Y	C R	22kΩ 1/2W	J
	R1952	NRSA63J-222X	MG R	2.2kΩ 1/16W	J
	R1953	QRE121J-152Y	C R	1.5kΩ 1/2W	J
	R1954	QRE121J-150Y	C R	15Ω 1/2W	J
	R1955	QRG01GJ-330	OM R	33Ω 1W	J
	R1956	QRE121J-120Y	C R	12Ω 1/2W	J
	R1957	QRE121J-5R6Y	C R	5.6Ω 1/2W	J
	R1958	QRL039J-820	OM R	82Ω 3W	J
	R1959	QRE121J-820Y	C R	82Ω 1/2W	J
	R1960	NRSA63J-391X	MG R	390Ω 1/16W	J
	R1961	QRL029J-223	OM R	22kΩ 2W	J
	R1962	NRSA63J-681X	MG R	680Ω 1/16W	J
	R1963	QRE121J-332Y	C R	3.3kΩ 1/2W	J
	R1964	NRSA63J-103X	MG R	10kΩ 1/16W	J
	R1965	NRSA63J-0R0X	MG R	0.0Ω 1/16W	J
	R1966	NRSA63J-223X	MG R	22kΩ 1/16W	J
	R1967	NRSA63J-473X	MG R	47kΩ 1/16W	J
	R1968	NRSA63J-331X	MG R	330Ω 1/16W	J
	R1969	QRT029J-1R5	MF R	1.5Ω 2W	J
	R1970	NRSA63J-153X	MG R	15kΩ 1/16W	J
	R1971	NRSA63J-183X	MG R	18kΩ 1/16W	J
	R1972	QRE121J-182Y	C R	1.8kΩ 1/2W	J
	R1973	QRE121J-332Y	C R	3.3kΩ 1/2W	J
	R1974	QRT029J-1R2	MF R	1.2Ω 2W	J
	R1991	QRZ0057-825	C R	8.2MΩ 1W	J
CAPACITOR					
	C1001	NCB31HK-103X	C CAP.	0.01μF 50V	K
	C1002	QETN1HM-106Z	E CAP.	10μF 50V	M
	C1003	QFV71HJ-104Z	MF CAP.	0.1μF 50V	J
	C1004	QETN1CM-477Z	E CAP.	470μF 16V	M
	C1005	NCB31HK-222X	C CAP.	2200pF 50V	K
	C1006	QETN1CM-336Z	E CAP.	33μF 16V	M
	C1007	NCB31HK-103X	C CAP.	0.01μF 50V	K
	C1101	NCB31HK-472X	C CAP.	4700pF 50V	K
	C1102	NCB31HK-472X	C CAP.	4700pF 50V	K
	C1103	NCB31HK-472X	C CAP.	4700pF 50V	K
	C1104	NCB31HK-472X	C CAP.	4700pF 50V	K
	C1105	NCB31HK-472X	C CAP.	4700pF 50V	K
	C1106	NDC31HJ-180X	C CAP.	18pF 50V	J
	C1107	NCB31HK-103X	C CAP.	0.01μF 50V	K
	C1108	NCB31HK-472X	C CAP.	4700pF 50V	K
	C1109	QETN1HM-106Z	E CAP.	10μF 50V	M
	C1150	NCB31HK-472X	C CAP.	4700pF 50V	K
	C1151	NCB31HK-472X	C CAP.	4700pF 50V	K
	C1301	NCB31CK-104X	C CAP.	0.1μF 16V	K
	C1302	NCB31CK-104X	C CAP.	0.1μF 16V	K
	C1304	NCB31HK-103X	C CAP.	0.01μF 50V	K
	C1305	NCB31HK-103X	C CAP.	0.01μF 50V	K
	C1306	NCB31CK-104X	C CAP.	0.1μF 16V	K
	C1307	NDC31HJ-330X	C CAP.	33pF 50V	J

△ Symbol No.	Part No.	Part Name	Description	Local
<b>CAPACITOR</b>				
C1308	NCB31HK-103X	C CAP.	0.01μF 50V K	
C1315	QFLC1HJ-473Z	M CAP.	0.047μF 50V J	
C1401	QETN1HM-336Z	E CAP.	33μF 50V M	
C1402	QCB31HK-682Z	C CAP.	6800pF 50V K	
C1403	QEHR1VM-107Z	E CAP.	100μF 35V M	
C1406	QFLC2AJ-683Z	M CAP.	0.068μF 100V J	
C1407	QCS32HJ-180Z	C CAP.	18pF 500V J	
C1411	NCF21HZ-334X	C CAP.	0.33μF 50V Z	
C1412	NCF21HZ-334X	C CAP.	0.33μF 50V Z	
C1413	QFLC2AJ-563Z	M CAP.	0.056μF 100V J	
C1422	QEHQ1VM-108	E CAP.	1000μF 35V M	
C1471	QETN1HM-106Z	E CAP.	10μF 50V M	
C1480	QETN1HM-106Z	E CAP.	10μF 50V M	
C1483	QEZ0195-475Z	BP E CAP.	4.7μF 50V M	
C1485	QETN1HM-226Z	E CAP.	22μF 50V M	
C1521	QETN1VM-476Z	E CAP.	47μF 35V M	
C1522	QFLC1HJ-332Z	M CAP.	3300pF 50V J	
C1523	QFLC1HJ-223Z	M CAP.	0.022μF 50V J	
C1524	QFZ0196-382	MPP CAP.	3800pF 1.5kVH±3%	
C1525	QFZ0200-143	MPP CAP.	0.014μF 1.5kVH±3%	
C1526	QFP32JJ-223	PP CAP.	0.022μF 630V J	
C1527	QFZ0199-224	MPP CAP.	0.22μF AC250V J	
C1528	QFZ0199-224	MPP CAP.	0.22μF AC250V J	
C1529	QENC2AM-225Z	BP E CAP.	2.2μF 100V M	
C1530	QCB32HK-561Z	C CAP.	560pF 500V K	
C1531	QEHR1EM-108Z	E CAP.	1000μF 25V M	
C1532	QCB32HK-561Z	C CAP.	560pF 500V K	
C1533	QEHR1EM-108Z	E CAP.	1000μF 25V M	
C1534	QCB32HK-561Z	C CAP.	560pF 500V K	
C1536	QFLC1HJ-103Z	M CAP.	0.01μF 50V J	
C1540	QFV71HJ-104Z	MF CAP.	0.1μF 50V J	
C1541	QETN2EM-106Z	E CAP.	10μF 250V M	
C1550	NCB31CK-104X	C CAP.	0.1μF 16V K	
C1561	QFV21HJ-154Z	MF CAP.	0.15μF 50V J	
C1566	QFZ0200-113	MPP CAP.	0.011μF 1.5kVH±3%	
C1591	QETN1CM-107Z	E CAP.	100μF 16V M	
C1592	QETM2CM-227	E CAP.	220μF 160V M	
C1593	QETN1EM-476Z	E CAP.	47μF 25V M	
C1602	NCB31HK-103X	C CAP.	0.01μF 50V K	
C1603	QETN1CM-107Z	E CAP.	100μF 16V M	
C1604	NCB31CK-104X	C CAP.	0.1μF 16V K	
C1606	NDC31HJ-2R0X	C CAP.	2.0pF 50V J	
C1607	NDC31HJ-2R0X	C CAP.	2.0pF 50V J	
C1608	NCB31HK-103X	C CAP.	0.01μF 50V K	
C1609	NCB31HK-103X	C CAP.	0.01μF 50V K	
C1610	QETN1HM-106Z	E CAP.	10μF 50V M	
C1611	NCB31CK-104X	C CAP.	0.1μF 16V K	
C1612	QETN1HM-106Z	E CAP.	10μF 50V M	
C1613	NCB31CK-104X	C CAP.	0.1μF 16V K	
C1615	QETN1HM-106Z	E CAP.	10μF 50V M	
C1616	NCB31CK-104X	C CAP.	0.1μF 16V K	
C1617	QETN1HM-106Z	E CAP.	10μF 50V M	
C1618	NCB31CK-104X	C CAP.	0.1μF 16V K	
C1619	QETN1HM-106Z	E CAP.	10μF 50V M	
C1620	NCB31HK-102X	C CAP.	1000pF 50V K	
C1621	NCB31HK-102X	C CAP.	1000pF 50V K	
C1625	NCF21EZ-474X	C CAP.	0.47μF 25V Z	
C1626	NCB31HK-333X	C CAP.	0.033μF 50V K	
C1627	NCB31HK-473X	C CAP.	0.047μF 50V K	
C1628	NCB31HK-223X	C CAP.	0.022μF 50V K	
C1629	NCB31HK-222X	C CAP.	2200pF 50V K	
C1630	NCB31HK-104X	C CAP.	0.1μF 50V K	
C1631	QETN1HM-475Z	E CAP.	4.7μF 50V M	
C1632	QETN1HM-475Z	E CAP.	4.7μF 50V M	
C1633	QETN1HM-475Z	E CAP.	4.7μF 50V M	
C1634	QETN1HM-475Z	E CAP.	4.7μF 50V M	
C1635	QETN1HM-475Z	E CAP.	4.7μF 50V M	
C1636	QETN1HM-475Z	E CAP.	4.7μF 50V M	
C1637	QETN1HM-475Z	E CAP.	4.7μF 50V M	
C1638	QETN1HM-475Z	E CAP.	4.7μF 50V M	
C1639	QETN1HM-107Z	E CAP.	100μF 50V M	
C1640	NCF21HZ-334X	C CAP.	0.33μF 50V Z	

△ Symbol No.	Part No.	Part Name	Description	Local
<b>CAPACITOR</b>				
C1641	QETN1HM-475Z	E CAP.	4.7μF 50V M	
C1643	NCB31HK-104X	C CAP.	0.1μF 50V K	
C1644	NCB31HK-222X	C CAP.	2200pF 50V K	
C1645	NCB31HK-104X	C CAP.	0.1μF 50V K	
C1646	NCB31HK-104X	C CAP.	0.1μF 50V K	
C1647	NCF21EZ-474X	C CAP.	0.47μF 25V Z	
C1648	NCB31HK-153X	C CAP.	0.015μF 50V K	
C1649	NCB31HK-153X	C CAP.	0.015μF 50V K	
C1650	NCF31AZ-105X	C CAP.	1μF 10V Z	
C1651	QEHR1HM-107Z	E CAP.	100μF 50V M	
C1652	QETN1HM-105Z	E CAP.	1μF 50V M	
C1653	NCF21HZ-224X	C CAP.	0.22μF 50V Z	
C1654	NCF21HZ-224X	C CAP.	0.22μF 50V Z	
C1655	NCF21HZ-224X	C CAP.	0.22μF 50V Z	
C1656	NCF21HZ-224X	C CAP.	0.22μF 50V Z	
C1662	QETN1HM-106Z	E CAP.	10μF 50V M	
C1681	QETN1CM-227Z	E CAP.	220μF 16V M	
C1682	QETN1CM-227Z	E CAP.	220μF 16V M	
C1683	QETN1CM-336Z	E CAP.	33μF 16V M	
C1684	QETN1HM-106Z	E CAP.	10μF 50V M	
C1702	QETN1HM-106Z	E CAP.	10μF 50V M	
C1703	NDC31HJ-330X	C CAP.	33pF 50V J	
C1704	NDC31HJ-330X	C CAP.	33pF 50V J	
C1706	NCB21EK-224X	C CAP.	0.22μF 25V K	
C1707	QETN1CM-107Z	E CAP.	100μF 16V M	
C1709	QETN1CM-477Z	E CAP.	470μF 16V M	
C1710	NCB21EK-224X	C CAP.	0.22μF 25V K	
C1711	NCB31CK-104X	C CAP.	0.1μF 16V K	
C1712	QETN1CM-476Z	E CAP.	47μF 16V M	
C1713	NCB31CK-104X	C CAP.	0.1μF 16V K	
C1720	QETN1EM-476Z	E CAP.	47μF 25V M	
C1725	NCB31HK-681X	C CAP.	680pF 50V K	
C1729	QETN1CM-476Z	E CAP.	47μF 16V M	
C1730	NCB21EK-224X	C CAP.	0.22μF 25V K	
C1731	NCB21EK-224X	C CAP.	0.22μF 25V K	
C1732	QETN1CM-107Z	E CAP.	100μF 16V M	
C1733	NCB31CK-104X	C CAP.	0.1μF 16V K	
C1734	NCB31HK-222X	C CAP.	2200pF 50V K	
C1735	NCB31HK-222X	C CAP.	2200pF 50V K	
C1736	QETN1HM-105Z	E CAP.	1μF 50V M	
C1737	QETN1HM-105Z	E CAP.	1μF 50V M	
C1738	NCB31CK-104X	C CAP.	0.1μF 16V K	
C1739	NFV41CJ-104X	MPP CAP.	0.1μF 16V J	
C1740	QETN1HM-225Z	E CAP.	2.2μF 50V M	
C1741	NCB31CK-104X	C CAP.	0.1μF 16V K	
C1742	NCB31CK-104X	C CAP.	0.1μF 16V K	
C1743	QETN1CM-107Z	E CAP.	100μF 16V M	
C1744	NCB31HK-222X	C CAP.	2200pF 50V K	
C1745	NCB31HK-473X	C CAP.	0.047μF 50V K	
C1747	NCB31HK-473X	C CAP.	0.047μF 50V K	
C1749	QETN1HM-106Z	E CAP.	10μF 50V M	
C1751	NCB21HK-104X	C CAP.	0.1μF 50V K	
C1752	NCB21HK-104X	C CAP.	0.1μF 50V K	
C1753	NCB21HK-104X	C CAP.	0.1μF 50V K	
C1801	QETN1HM-106Z	E CAP.	10μF 50V M	
C1802	QETN1HM-106Z	E CAP.	10μF 50V M	
C1803	QETN1HM-106Z	E CAP.	10μF 50V M	
C1804	QETN1HM-106Z	E CAP.	10μF 50V M	
C1805	NCB31CK-104X	C CAP.	0.1μF 16V K	
C1806	NCB31CK-104X	C CAP.	0.1μF 16V K	
C1807	NCF31AZ-105X	C CAP.	1μF 10V Z	
C1808	NCF31AZ-105X	C CAP.	1μF 10V Z	
C1809	NCB31HK-103X	C CAP.	0.01μF 50V K	
C1810	NCF31AZ-105X	C CAP.	1μF 10V Z	
C1811	NCB31CK-104X	C CAP.	0.1μF 16V K	
C1812	NCF31AZ-105X	C CAP.	1μF 10V Z	
C1813	NCB31HK-103X	C CAP.	0.01μF 50V K	
C1814	NCB31CK-104X	C CAP.	0.1μF 16V K	
C1815	NCF31AZ-105X	C CAP.	1μF 10V Z	
C1817	NCF31AZ-105X	C CAP.	1μF 10V Z	
C1819	NCB31CK-104X	C CAP.	0.1μF 16V K	
C1820	NCF31AZ-105X	C CAP.	1μF 10V Z	



△	Symbol No.	Part No.	Part Name	Description	Local
<b>CAPACITOR</b>					
	C1821	NCF31AZ-105X	C CAP.	1μF 10V Z	
	C1822	QETN1CM-477Z	E CAP.	470μF 16V M	
	C1823	QETN1CM-107Z	E CAP.	100μF 16V M	
	C1824	QETN1CM-107Z	E CAP.	100μF 16V M	
	C1825	NCB31HK-103X	C CAP.	0.01μF 50V K	
	C1826	NCB31CK-104X	C CAP.	0.1μF 16V K	
	C1827	NCB31HK-103X	C CAP.	0.01μF 50V K	
	C1829	NCB31HK-103X	C CAP.	0.01μF 50V K	
	C1830	NCB31HK-103X	C CAP.	0.01μF 50V K	
	C1831	NCB31HK-103X	C CAP.	0.01μF 50V K	
	C1833	QETN1HM-226Z	E CAP.	22μF 50V M	
	C1834	NDC31HJ-181X	C CAP.	180pF 50V J	
△	C1902	QFZ9072-104	MM CAP.	0.1μF	
	C1903	QCZ9015-102Z	C CAP.	1000pF AC250V Z	
	C1904	QCZ9015-102Z	C CAP.	1000pF AC250V Z	
	C1905	QCZ9015-102Z	C CAP.	1000pF AC250V Z	
	C1907	QEZO371-337	E CAP.	330μF 400V M	
	C1909	QCZ0325-102	C CAP.	1000pF 2000V K	
	C1910	NDC31HJ-102X	C CAP.	1000pF 50V J	
	C1911	QETN1VM-107Z	E CAP.	100μF 35V M	
	C1915	QCB32HK-222Z	C CAP.	2200pF 500V K	
	C1916	QETN1HM-475Z	E CAP.	4.7μF 50V M	
	C1917	QCB32HK-181Z	C CAP.	180pF 500V K	
	C1918	QCB32HK-103	C CAP.	0.01μF 500V K	
	C1919	QCZ0325-391	C CAP.	390pF 2000V K	
	C1920	QCZ0122-471	C CAP.	470pF 2000V K	
	C1921	QFN31HJ-473Z	M CAP.	0.047μF 50V J	
	C1922	QETN2AM-226Z	E CAP.	22μF 100V M	
	C1952	QCB32HK-471Z	C CAP.	470pF 500V K	
	C1953	QEHQ1VM-228	E CAP.	2200μF 35V M	
	C1955	QCB32HK-471Z	C CAP.	470pF 500V K	
	C1956	QETN1VM-107Z	E CAP.	100μF 35V M	
	C1957	QCB31HK-471Z	C CAP.	470pF 50V K	
	C1958	QEHR1CM-108Z	E CAP.	1000μF 16V M	
	C1959	QCZ0364-561	C CAP.	560pF 50V M	
	C1960	QEZO203-227	E CAP.	220μF 160V M	
	C1961	QETN1CM-476Z	E CAP.	47μF 16V M	
	C1962	QETN1HM-106Z	E CAP.	10μF 50V M	
	C1963	QETN1CM-477Z	E CAP.	470μF 16V M	
	C1964	QETN1EM-476Z	E CAP.	47μF 25V M	
	C1965	QETN1VM-476Z	E CAP.	47μF 35V M	
	C1966	QETN1CM-107Z	E CAP.	100μF 16V M	
	C1968	NCB31CK-104X	C CAP.	0.1μF 16V K	
	C1970	QETN1CM-107Z	E CAP.	100μF 16V M	
	C1972	QETN1EM-476Z	E CAP.	47μF 25V M	
	C1974	NCB31CK-104X	C CAP.	0.1μF 16V K	
	C1975	QETN1CM-227Z	E CAP.	220μF 16V M	
	C1977	QETN1EM-476Z	E CAP.	47μF 25V M	
	C1978	NCB21HK-104X	C CAP.	0.1μF 50V K	
	C1980	QETN1CM-107Z	E CAP.	100μF 16V M	
	C1981	NCB31HK-102X	C CAP.	1000pF 50V K	
	C1982	QETN1CM-476Z	E CAP.	47μF 16V M	
	C1983	QETN1CM-227Z	E CAP.	220μF 16V M	
△	C1991	QCZ9079-102	C CAP.	1000pF AC250V M	
△	C1992	QCZ9079-102	C CAP.	1000pF AC250V M	
△	C1993	QCZ9079-102	C CAP.	1000pF AC250V M	
<b>TRANSFORMER</b>					
	T1521	QQR1229-001	DRIVE TRANSF		
△	T1551	QQH0139-001	FBT(HV WIRELESS)		
	T1561	QQR1153-001	DEF TRANSF		
△	T1901	QQS0110-001	SW TRANSF		
<b>COIL</b>					
	L1001	QQL244K-8R2Z	COIL	8.2μH K	
	L1002	QQL244K-8R2Z	COIL	8.2μH K	
	L1101	QQL2014-R82	COIL	0.82μH	
	L1102	QQL244K-180Z	COIL	18μH K	
	L1301	QQL244K-221Z	PEAKING COIL	220μH K	
	L1401	QQL26AK-220Z	COIL	22μH K	
	L1480	QQR1138-001	CHOKE COIL		
	L1523	QQR1243-001	LINEARITY COIL		

△	Symbol No.	Part No.	Part Name	Description	Local
<b>COIL</b>					
	L1541	QQL244K-220Z	COIL	22μH K	
	L1561	QQL2028-272	COIL	2700μH	
	L1601	QQL244K-4R7Z	COIL	4.7μH K	
	L1701	QQL244K-100Z	COIL	10μH K	
	L1702	QQL244K-100Z	COIL	10μH K	
	L1731	QQL244J-101Z	COIL	100μH J	
	L1951	QQLZ034-460	COIL	46μH	
	L1953	QQL244J-5R6Z	COIL	5.6μH J	
	L1954	QQL26AK-820Z	COIL	82μH K	
<b>DIODE</b>					
	D1101	DAN235K-X	SI. DIODE		
	D1301	MTZJ5.1B-T2	ZENER DIODE		
	D1401	RGP10J-5025-T3	SI. DIODE		
	D1402	MTZJ75-T2	ZENER DIODE		
	D1405	1N4003-T2	SI. DIODE		
	D1408	MA111-X	SI. DIODE		
	D1480	MTZJ4.3A-T2	ZENER DIODE		
	D1521	RH3G-F1	SI. DIODE		
	D1522	31DF6N-FC5	SI. DIODE		
	D1523	RGP10J-5025-T3	SI. DIODE		
	D1541	RGP10J-5025-T3	SI. DIODE		
	D1550	MA111-X	SI. DIODE		
	D1551	EU2-T3	SI. DIODE		
	D1553	RGP10J-5025-T3	SI. DIODE		
	D1554	RGP10J-5025-T3	SI. DIODE		
	D1592	MA3075/H/-X	ZENER DIODE		
	D1652	MA3330/L/-X	ZENER DIODE		
	D1653	MA3330/L/-X	ZENER DIODE		
	D1655	MA111-X	SI. DIODE		
	D1657	MA111-X	SI. DIODE		
	D1701	MA111-X	SI. DIODE		
	D1702	MA3020-X	ZENER DIODE		
	D1703	MA3036-X	ZENER DIODE		
	D1730	MA111-X	SI. DIODE		
	D1731	MA111-X	SI. DIODE		
	D1732	MA111-X	SI. DIODE		
	D1733	MA111-X	SI. DIODE		
	D1801	MA3120/M/-X	ZENER DIODE		
	D1802	MA3120/M/-X	ZENER DIODE		
	D1901	GSIB460	BRIDGE DIODE		
	D1902	MTZJ33B-T2	ZENER DIODE		
	D1906	MTZJ27B-T2	ZENER DIODE		
	D1907	MTZJ33B-T2	ZENER DIODE		
	D1908	MA3200/M/-X	ZENER DIODE		
	D1909	1SS133-T2	SI. DIODE		
	D1911	RGP10J-5025-T3	SI. DIODE		
	D1912	RGP10J-5025-T3	SI. DIODE		
	D1913	RGP10M-5010-T3	SI. DIODE		
	D1914	NRSA63J-0R0X	MG R	0.0Ω 1/16W J	
	D1915	MTZJ39B-T2	ZENER DIODE		
	D1916	MTZJ15B-T2	ZENER DIODE		
	D1917	1SS133-T2	SI. DIODE		
	D1920	MTZJ15B-T2	ZENER DIODE		
	D1950	RGP10J-5025-T3	SI. DIODE		
	D1952	ERC30-02L38	SI. DIODE		
	D1953	RGP10J-5025-T3	SI. DIODE		
	D1954	RU30A-F1	SI. DIODE		
	D1955	1SR35-400A-T2	SI. DIODE		
	D1956	31DF6N-FC5	SI. DIODE		
	D1958	MTZJ5.1A-T2	ZENER DIODE		
	D1960	MA111-X	SI. DIODE		
	D1964	MA3330/L/-X	ZENER DIODE		
	D1966	MA3047/L/-X	ZENER DIODE		
	D1968	MA111-X	SI. DIODE		
	D1969	MA111-X	SI. DIODE		
	D1970	MTZJ9.1B-T2	ZENER DIODE		
	D1971	NRSA02J-0R0X	MG R	0.0Ω 1/10W J	

△ Symbol No.	Part No.	Part Name	Description	Local
<b>TRANSISTOR</b>				
Q1101	2SC5083/L-P/-T	TRANSISTOR		
Q1102	UN2212-X	DIGI. TRANSISTOR		
Q1103	UN2212-X	DIGI. TRANSISTOR		
Q1104	2SB709A/QR/-X	TRANSISTOR		
Q1105	2SD601A/QR/-X	TRANSISTOR		
Q1106	2SB709A/QR/-X	TRANSISTOR		
Q1107	UN2212-X	DIGI. TRANSISTOR		
Q1108	2SD601A/QR/-X	TRANSISTOR		
Q1109	UN2212-X	DIGI. TRANSISTOR		
Q1110	UN2212-X	DIGI. TRANSISTOR		
Q1150	2SD601A/QR/-X	TRANSISTOR		
Q1301	2SB709A/QR/-X	TRANSISTOR		
Q1302	2SB709A/QR/-X	TRANSISTOR		
Q1303	UN2212-X	DIGI. TRANSISTOR		
Q1304	2SD601A/QR/-X	TRANSISTOR		
Q1480	2SD1408/OY/-LB	POWER TRANSISTOR		
Q1521	2SC2655/Y/-T	TRANSISTOR		
Q1522	2SD2634-YD	POWER TRANSISTOR		
Q1591	2SA1208/ST/Z1-T	TRANSISTOR		
Q1592	UN2212-X	DIGI. TRANSISTOR		
Q1660	2SD601A/QR/-X	TRANSISTOR		
Q1661	2SD601A/QR/-X	TRANSISTOR		
Q1683	2SB709A/QR/-X	TRANSISTOR		
Q1684	2SB709A/QR/-X	TRANSISTOR		
Q1685	DTC323TK-X	DIGI. TRANSISTOR		
Q1686	DTC323TK-X	DIGI. TRANSISTOR		
Q1701	2SB709A/QR/-X	TRANSISTOR		
Q1702	2SB709A/QR/-X	TRANSISTOR		
Q1720	2SB709A/QR/-X	TRANSISTOR		
Q1801	DTC323TK-X	DIGI. TRANSISTOR		
Q1802	DTC323TK-X	DIGI. TRANSISTOR		
Q1803	2SB709A/QR/-X	TRANSISTOR		
Q1804	2SC1740S/QR/-T	TRANSISTOR		
Q1860	2SD601A/QR/-X	TRANSISTOR		
Q1861	2SB709A/QR/-X	TRANSISTOR		
Q1862	2SB709A/QR/-X	TRANSISTOR		
Q1901	2SC3852A	POWER TRANSISTOR		
Q1951	2SA1013/RO/-T	TRANSISTOR		
Q1952	2SD601A/QR/-X	TRANSISTOR		
Q1953	2SD601A/QR/-X	TRANSISTOR		
Q1954	2SD601A/QR/-X	TRANSISTOR		
Q1955	2SD601A/QR/-X	TRANSISTOR		
<b>IC</b>				
IC1301	TDA9181T/N1-X	I.C(MONO-ANA)		
IC1401	LA78041	I.C(MONO-ANA)		
IC1461	JLC1562BF-X	I.C(MONO-ANA)		
IC1480	UPC358G2-XE	I.C(MONOLITHIC)		
IC1601	MSP3417G-X	I.C(MONO-ANA)		
IC1602	NJW1136G-X	I.C(MONO-ANA)		
IC1650	AN5277	I.C(MONO-ANA)		
IC1701	TDA9365N23S0873	I.C(MCU)		
IC1702	AT24C08-21WS3	I.C(MEMORY-OTH)	(SERVICE)	
IC1801	MM1492AF	I.C(MONO-ANA)		
IC1901	STR-F6256S-F7	I C(HYBRID)		
IC1951	SE135N	I C(HYBRID)		
IC1972	L88M33T-X	I.C(MONO-ANA)		
IC1973	BA17812T	I.C(MONO-ANA)		
IC1974	BA51W12ST-V5	I.C(MONO-ANA)		
<b>OTHERS</b>				
△ CF1103	QAX0639-001Z	C TRAP		
△ CP1951	ICP-N75-Y	IC PROTECTOR		
△ CP1952	ICP-N38-Y	IC PROTECTOR		
△ CP1953	ICP-N38-Y	IC PROTECTOR		
J1801	QNZ0454-001	AV JACK		
J1802	QNN0349-002	PIN JACK		
J1803	QNN0348-001	PIN JACK		
J1804	QNN0349-001	PIN JACK		

△ Symbol No.	Part No.	Part Name	Description	Local
<b>OTHERS</b>				
K1705	QQR1214-001Y	FERRITE BEADS		
K1901	QQR1214-001Y	FERRITE BEADS		
K1902	QQR1214-001Y	FERRITE BEADS		
K1903	QQR1214-001Y	FERRITE BEADS		
K1951	QQR1214-001Y	FERRITE BEADS		
K1953	QQR1214-001Y	FERRITE BEADS		
K1954	QQR1214-001Y	FERRITE BEADS		
K1955	QQR1214-001Y	FERRITE BEADS		
△ LF1901	QQR1356-001	LINE FILTER		
△ PC1901	PC123F2	IC(PHOTO COUPLE)		
△ RY1901	QSK0061-001	RELAY		
SF1101	QAX0663-001	SAW FILTER		
SF1102	QAX0731-001	SAW FILTER		
TH1901	QAD0145-2R3	P THERMISTOR		
TU1001	QAU0185-005	TUNER		
W1010	NRSA63J-0R0X	MG R	0.0Ω 1/16W	J
W1031	NRSA63J-0R0X	MG R	0.0Ω 1/16W	J
W1239	NRSA63J-0R0X	MG R	0.0Ω 1/16W	J
W1256	QQR1113-001Z	FERRITE BEADS		
W1257	NRSA63J-0R0X	MG R	0.0Ω 1/16W	J
W1306	NRSA63J-0R0X	MG R	0.0Ω 1/16W	J
W1307	NRSA63J-0R0X	MG R	0.0Ω 1/16W	J
W1309	NRSA63J-0R0X	MG R	0.0Ω 1/16W	J
W1321	NRSA63J-0R0X	MG R	0.0Ω 1/16W	J
W1325	NRSA63J-0R0X	MG R	0.0Ω 1/16W	J
W1326	NRSA63J-0R0X	MG R	0.0Ω 1/16W	J
W1333	QQR1113-001Z	FERRITE BEADS		
W1334	NRSA63J-0R0X	MG R	0.0Ω 1/16W	J
W1379	NRSA63J-0R0X	MG R	0.0Ω 1/16W	J
W1386	NRSA63J-0R0X	MG R	0.0Ω 1/16W	J
W1395	NRSA63J-0R0X	MG R	0.0Ω 1/16W	J
W1397	NRSA63J-0R0X	MG R	0.0Ω 1/16W	J
W1402	QQR1113-001Z	FERRITE BEADS		
W1405	NRSA63J-0R0X	MG R	0.0Ω 1/16W	J
W1418	NRSA63J-0R0X	MG R	0.0Ω 1/16W	J
W1423	NRSA63J-0R0X	MG R	0.0Ω 1/16W	J
W1428	NRSA63J-0R0X	MG R	0.0Ω 1/16W	J
W1430	NRSA63J-0R0X	MG R	0.0Ω 1/16W	J
W1431	QQR1113-001Z	FERRITE BEADS		
X1601	CE42546-001Z	X TAL		
X1701	QAX0737-001	CRYSTAL		
Y1004	NRSA63J-0R0X	MG R	0.0Ω 1/16W	J
Y1602	NRSA63J-0R0X	MG R	0.0Ω 1/16W	J
Y1603	NRSA63J-0R0X	MG R	0.0Ω 1/16W	J

**CRT SOCKET PW BOARD ASS'Y (SCH-3005A-H2)**

△ Symbol No.	Part No.	Part Name	Description	Local
<b>RESISTOR</b>				
R3101	NRSA63J-682X	MG R	6.8kΩ 1/16W	J
R3102	NRSA63J-102X	MG R	1kΩ 1/16W	J
R3103	NRSA63J-153X	MG R	15kΩ 1/16W	J
R3104	NRSA63J-682X	MG R	6.8kΩ 1/16W	J
R3105	NRSA63J-102X	MG R	1kΩ 1/16W	J
R3106	NRSA63J-272X	MG R	2.7kΩ 1/16W	J
R3107	NRSA63J-682X	MG R	6.8kΩ 1/16W	J
R3108	NRSA63J-102X	MG R	1kΩ 1/16W	J
R3109	NRSA63J-562X	MG R	5.6kΩ 1/16W	J
R3110	NRSA63J-101X	MG R	100Ω 1/16W	J
R3111	NRSA63J-101X	MG R	100Ω 1/16W	J
R3112	NRSA63J-101X	MG R	100Ω 1/16W	J
R3113	NRSA63J-563X	MG R	56kΩ 1/16W	J
R3120	QRE121J-101Y	C R	100Ω 1/2W	J
R3121	NRSA63J-101X	MG R	100Ω 1/16W	J
R3122	NRSA63J-101X	MG R	100Ω 1/16W	J

△ Symbol No.	Part No.	Part Name	Description	Local
<b>RESISTOR</b>				
R3123	QRE121J-152Y	C R	1.5kΩ 1/2W J	
R3124	NRSA63J-221X	MG R	220Ω 1/16W J	
R3125	NRSA63J-101X	MG R	100Ω 1/16W J	
R3126	NRSA63J-101X	MG R	100Ω 1/16W J	
R3127	QRE121J-152Y	C R	1.5kΩ 1/2W J	
R3128	NRSA63J-221X	MG R	220Ω 1/16W J	
R3129	NRSA63J-101X	MG R	100Ω 1/16W J	
R3130	NRSA63J-101X	MG R	100Ω 1/16W J	
R3131	QRE121J-152Y	C R	1.5kΩ 1/2W J	
R3132	NRSA63J-221X	MG R	220Ω 1/16W J	
R3133	NRSA63J-470X	MG R	47Ω 1/16W J	
R3136	NRSA63J-470X	MG R	47Ω 1/16W J	
R3137	NRSA63J-470X	MG R	47Ω 1/16W J	
R3138	QRL029J-223	OM R	22kΩ 2W J	
R3139	QRL029J-223	OM R	22kΩ 2W J	
R3140	QRZ0107-102Z	C R	1kΩ 1W K	
R3141	QRL029J-223	OM R	22kΩ 2W J	
R3143	QRL029J-223	OM R	22kΩ 2W J	
R3144	QRZ0107-102Z	C R	1kΩ 1W K	
R3145	QRL029J-223	OM R	22kΩ 2W J	
R3146	QRL029J-223	OM R	22kΩ 2W J	
R3147	QRZ0107-102Z	C R	1kΩ 1W K	
R3148	QRE121J-124Y	C R	120kΩ 1/2W J	
R3149	QRE121J-102Y	C R	1kΩ 1/2W J	
R3151	QRE121J-124Y	C R	120kΩ 1/2W J	
R3152	QRE121J-102Y	C R	1kΩ 1/2W J	
R3153	QRE121J-124Y	C R	120kΩ 1/2W J	
R3154	QRE121J-102Y	C R	1kΩ 1/2W J	
R3155	QRE121J-474Y	C R	470kΩ 1/2W J	
R3157	QRZ0107-474Z	C R	470kΩ 1W K	
R3159	NRSA63J-184X	MG R	180kΩ 1/16W J	
R3161	QRE121J-333Y	C R	33kΩ 1/2W J	
R3164	QRE121J-560Y	C R	56Ω 1/2W J	
R3166	QRE121J-333Y	C R	33kΩ 1/2W J	
R3167	NRSA63J-222X	MG R	2.2kΩ 1/16W J	
R3168	NRSA63J-103X	MG R	10kΩ 1/16W J	
R3170	NRSA63J-332X	MG R	3.3kΩ 1/16W J	
R3171	NRSA63J-681X	MG R	680Ω 1/16W J	
R3172	NRSA63J-0R0X	MG R	0.0Ω 1/16W J	
R3173	NRSA63J-0R0X	MG R	0.0Ω 1/16W J	
R3174	NRSA63J-0R0X	MG R	0.0Ω 1/16W J	
R3211	NRSA63J-0R0X	MG R	0.0Ω 1/16W J	
R3212	NRSA63J-153X	MG R	15kΩ 1/16W J	
R3213	NRSA63J-222X	MG R	2.2kΩ 1/16W J	
R3214	NRSA63J-152X	MG R	1.5kΩ 1/16W J	
R3215	NRSA63J-680X	MG R	68Ω 1/16W J	
R3216	NRSA63J-221X	MG R	220Ω 1/16W J	
△ R3217	QRJ146J-100X	UNF R	10Ω 1/4W J	
R3221	NRSA63J-470X	MG R	47Ω 1/16W J	
R3222	NRSA63J-470X	MG R	47Ω 1/16W J	
R3224	NRSA63J-122X	MG R	1.2kΩ 1/16W J	
R3225	QRE121J-563Y	C R	56kΩ 1/2W J	
R3226	QRE121J-563Y	C R	56kΩ 1/2W J	
R3227	NRSA63J-122X	MG R	1.2kΩ 1/16W J	
R3228	NRSA63J-390X	MG R	39Ω 1/16W J	
R3229	QRE121J-2R7Y	C R	2.7Ω 1/2W J	
R3230	QRE121J-2R7Y	C R	2.7Ω 1/2W J	
R3231	NRSA63J-390X	MG R	39Ω 1/16W J	
R3232	QRE121J-121Y	C R	120Ω 1/2W J	
R3233	QRL029J-391	OM R	390Ω 2W J	
R3251	NDC31HJ-331X	C CAP.	330pF 50V J	
R3252	NRSA63J-222X	MG R	2.2kΩ 1/16W J	
R3253	NRSA63J-101X	MG R	100Ω 1/16W J	
R3254	NRSA63J-563X	MG R	56kΩ 1/16W J	
R3255	NRSA63J-223X	MG R	22kΩ 1/16W J	
R3256	NRSA63J-681X	MG R	680Ω 1/16W J	
R3257	NRSA63J-102X	MG R	1kΩ 1/16W J	
R3258	NRSA63J-182X	MG R	1.8kΩ 1/16W J	
R3259	NRSA63J-102X	MG R	1kΩ 1/16W J	
R3260	NRSA63J-271X	MG R	270Ω 1/16W J	
R3261	NRSA63J-101X	MG R	100Ω 1/16W J	
R3262	NRSA63J-101X	MG R	100Ω 1/16W J	

△ Symbol No.	Part No.	Part Name	Description	Local
<b>RESISTOR</b>				
R3263	NRSA63J-101X	MG R	100Ω 1/16W J	
R3264	NRSA63J-222X	MG R	2.2kΩ 1/16W J	
R3265	NRSA63J-102X	MG R	1kΩ 1/16W J	
R3266	NRSA63J-103X	MG R	10kΩ 1/16W J	
R3267	NRSA63J-102X	MG R	1kΩ 1/16W J	
R3268	NRSA63J-222X	MG R	2.2kΩ 1/16W J	
R3269	NRSA63J-102X	MG R	1kΩ 1/16W J	
R3270	NRSA63J-103X	MG R	10kΩ 1/16W J	
R3271	NRSA63J-102X	MG R	1kΩ 1/16W J	
R3272	NRSA63J-222X	MG R	2.2kΩ 1/16W J	
R3273	NRSA63J-102X	MG R	1kΩ 1/16W J	
R3274	NRSA63J-103X	MG R	10kΩ 1/16W J	
R3275	NRSA63J-102X	MG R	1kΩ 1/16W J	

**CAPACITOR**

C3101	QETN1CM-477Z	E CAP.	470μF 16V M	
C3107	QETM2EM-106	E CAP.	10μF 250V M	
C3108	QETM2EM-476	E CAP.	47μF 250V M	
C3110	QCZ0131-222	C CAP.	2200pF 2000V K	
C3114	QCS31HJ-151Z	C CAP.	150pF 50V J	
C3115	QETN1CM-476Z	E CAP.	47μF 16V M	
C3116	NDC31HJ-561X	C CAP.	560pF 50V J	
C3117	NCB31HK-471X	C CAP.	470pF 50V K	
C3118	NCB31HK-471X	C CAP.	470pF 50V K	
C3119	QFLC1HJ-104Z	M CAP.	0.1μF 50V J	
C3120	QETN1HM-105Z	E CAP.	1μF 50V M	
C3121	NCB31HK-102X	C CAP.	1000pF 50V K	
C3204	NDC31HJ-561X	C CAP.	560pF 50V J	
C3205	QETN1HM-335Z	E CAP.	3.3μF 50V M	
C3206	QETN1HM-106Z	E CAP.	10μF 50V M	
C3207	QCS31HJ-5R0Z	C CAP.	5.0pF 50V J	
C3209	QETN1CM-107Z	E CAP.	100μF 16V M	
C3211	NDC31HJ-391X	C CAP.	390pF 50V J	
C3212	QCB32HK-472Z	C CAP.	4700pF 500V K	
C3213	NDC31HJ-561X	C CAP.	560pF 50V J	
C3214	QETN2CM-106Z	E CAP.	10μF 160V M	
C3215	QCB32HK-472Z	C CAP.	4700pF 500V K	
C3216	QETN2CM-106Z	E CAP.	10μF 160V M	
C3217	QETN1AM-107Z	E CAP.	100μF 10V M	
C3218	QETN1AM-107Z	E CAP.	100μF 10V M	
C3219	QETN1AM-337Z	E CAP.	330μF 10V M	
C3220	QCS32HJ-680Z	C CAP.	68pF 500V J	
C3251	QENC1HM-105Z	BP E CAP.	1μF 50V M	
C3252	NDC31HJ-151X	C CAP.	150pF 50V J	
C3253	NDC31HJ-560X	C CAP.	56pF 50V J	
C3255	NCB31HK-104X	C CAP.	0.1μF 50V K	
C3261	NDC31HJ-820X	C CAP.	82pF 50V J	
C3262	NDC31HJ-820X	C CAP.	82pF 50V J	
C3263	NDC31HJ-820X	C CAP.	82pF 50V J	
C3264	QETN1AM-107Z	E CAP.	100μF 10V M	
C3265	QETN1AM-107Z	E CAP.	100μF 10V M	
C3266	QETN1AM-107Z	E CAP.	100μF 10V M	
C3267	QETN1CM-227Z	E CAP.	220μF 16V M	

**COIL**

L3121	QQL244J-5R6Z	COIL	5.6μH	J
L3122	QQLZ034-220	COIL	22μH	
L3251	QQL244K-150Z	COIL	15μH	K

**DIODE**

D3107	MA111-X	SI. DIODE		
D3108	MA3075/H/-X	ZENER DIODE		
D3109	MA3051/H/-X	ZENER DIODE		
D3110	MA111-X	SI. DIODE		
D3111	MA3051/H/-X	ZENER DIODE		
D3112	MA111-X	SI. DIODE		
D3113	MA3051/H/-X	ZENER DIODE		
D3114	MA111-X	SI. DIODE		

△ Symbol No.	Part No.	Part Name	Description	Local
<b>DIODE</b>				
D3118	1SS244-T2	SI. DIODE		
D3119	1SS244-T2	SI. DIODE		
D3120	1SS244-T2	SI. DIODE		
D3121	1SS244-T2	SI. DIODE		
D3122	1SS244-T2	SI. DIODE		
D3123	1SS244-T2	SI. DIODE		
D3124	1N4003-T2	SI. DIODE		
D3125	1N4003-T2	SI. DIODE		
D3126	1N4003-T2	SI. DIODE		
D3127	MA111-X	SI. DIODE		
D3130	MA3150/M/-X	ZENER DIODE		
D3132	MA3043-X	ZENER DIODE		
D3134	1SS244-T2	SI. DIODE		
D3136	MA111-X	SI. DIODE		
D3138	MA111-X	SI. DIODE		
D3141	MTZJ30A-T2	ZENER DIODE		
D3142	MTZJ30A-T2	ZENER DIODE		
D3143	MTZJ30A-T2	ZENER DIODE		
D3201	NRSA63J-0R0X	MG R	0.0Ω 1/16W J	
D3202	NRSA63J-0R0X	MG R	0.0Ω 1/16W J	
D3203	RGP10J-5025-T3	SI. DIODE		
D3204	RGP10J-5025-T3	SI. DIODE		

**TRANSISTOR**

Q3101	2SD601A/QR/-X	TRANSISTOR		
Q3102	2SD601A/QR/-X	TRANSISTOR		
Q3103	2SD601A/QR/-X	TRANSISTOR		
Q3104	2SD601A/QR/-X	TRANSISTOR		
Q3105	2SD601A/QR/-X	TRANSISTOR		
Q3106	2SD601A/QR/-X	TRANSISTOR		
Q3121	2SC1740S/QR/-T	TRANSISTOR		
Q3122	2SA933AS/QR/-T	TRANSISTOR		
Q3123	2SC4075/DE/YA11	POWER TRANSISTOR		
Q3124	2SC1740S/QR/-T	TRANSISTOR		
Q3125	2SC4075/DE/YA11	POWER TRANSISTOR		
Q3126	2SC1740S/QR/-T	TRANSISTOR		
Q3127	2SC4075/DE/YA11	POWER TRANSISTOR		
Q3128	2SC1740S/QR/-T	TRANSISTOR		
Q3129	2SC3334-T	TRANSISTOR		
Q3130	2SA1321-T	TRANSISTOR		
Q3131	2SC3334-T	TRANSISTOR		
Q3132	2SA1321-T	TRANSISTOR		
Q3133	2SC3334-T	TRANSISTOR		
Q3134	2SA1321-T	TRANSISTOR		
Q3135	2SB709A/QR/-X	TRANSISTOR		
Q3204	2SC1740S/QR/-T	TRANSISTOR		
Q3205	2SC1740S/QR/-T	TRANSISTOR		
Q3206	2SA933AS/QR/-T	TRANSISTOR		
Q3209	2SA1837	POWER TRANSISTOR		
Q3210	2SC4793	POWER TRANSISTOR		
Q3251	2SB709A/QR/-X	TRANSISTOR		
Q3252	2SD601A/QR/-X	TRANSISTOR		
Q3253	2SB709A/QR/-X	TRANSISTOR		
Q3261	2SB709A/QR/-X	TRANSISTOR		
Q3262	2SB709A/QR/-X	TRANSISTOR		
Q3263	2SB709A/QR/-X	TRANSISTOR		
Q3264	2SD601A/QR/-X	TRANSISTOR		
Q3265	2SD601A/QR/-X	TRANSISTOR		
Q3266	2SD601A/QR/-X	TRANSISTOR		

**OTHERS**

CL3001	QZW0027-004	WIRE CLAMP		
DL3261	CE41925-001	DELAY LINE		
DL3262	CE41925-001	DELAY LINE		
DL3263	CE41925-001	DELAY LINE		
△ FR3201	QRZ9021-561	F R	560Ω 1W J	
K3201	CE41492-001Z	CHOKE COIL		
K3202	CE41492-001Z	CHOKE COIL		
K3203	CE41492-001Z	CHOKE COIL		

△ Symbol No.	Part No.	Part Name	Description	Local
<b>OTHERS</b>				
K3204	CE41492-001Z	CHOKE COIL		
K3205	QQR1113-001Z	FERRITE BEADS		
K3206	QQR1113-001Z	FERRITE BEADS		
K3207	QQR1113-001Z	FERRITE BEADS		
K3208	QQR1113-001Z	FERRITE BEADS		
SG3101	QAF0056-501Z	SURGE ABSORBER		
SG3102	QAF0056-501Z	SURGE ABSORBER		
△ SK3001	CE42670-001	CRT SOCKET		
W3034	NRSA63J-0R0X	MG R	0.0Ω 1/16W J	

**FRONT CONTROL PW BOARD ASS'Y (SCH-8004A-H2)**

△ Symbol No.	Part No.	Part Name	Description	Local
<b>RESISTOR</b>				
R8482	NRSA63J-124X	MG R	120kΩ 1/16W J	
R8483	NRSA63J-683X	MG R	68kΩ 1/16W J	
R8484	NRSA63J-562X	MG R	5.6kΩ 1/16W J	
R8485	NRSA63J-562X	MG R	5.6kΩ 1/16W J	
R8486	NRSA63J-333X	MG R	33kΩ 1/16W J	
R8487	NRSA63J-332X	MG R	3.3kΩ 1/16W J	
R8488	NRSA63J-154X	MG R	150kΩ 1/16W J	
R8489	NRSA63J-104X	MG R	100kΩ 1/16W J	
R8491	NRSA63J-0R0X	MG R	0.0Ω 1/16W J	
R8492	NRSA63J-0R0X	MG R	0.0Ω 1/16W J	
R8495	NRSA63J-152X	MG R	1.5kΩ 1/16W J	
R8497	NRSA63J-562X	MG R	5.6kΩ 1/16W J	
R8499	QRE121J-561Y	C R	560Ω 1/2W J	
R8801	NRSA63J-332X	MG R	3.3kΩ 1/16W J	
R8802	NRSA63J-392X	MG R	3.9kΩ 1/16W J	
R8803	NRSA63J-682X	MG R	6.8kΩ 1/16W J	
R8805	NRSA63J-682X	MG R	6.8kΩ 1/16W J	
R8807	NRSA63J-181X	MG R	180Ω 1/16W J	
R8808	NRSA63J-221X	MG R	220Ω 1/16W J	
R8809	NRSA63J-331X	MG R	330Ω 1/16W J	
R8810	NRSA63J-471X	MG R	470Ω 1/16W J	
R8811	NRSA63J-821X	MG R	820Ω 1/16W J	
R8812	NRSA63J-122X	MG R	1.2kΩ 1/16W J	
R8813	NRSA63J-471X	MG R	470Ω 1/16W J	
R8815	QRE121J-271Y	C R	270Ω 1/2W J	
R8816	QRE121J-271Y	C R	270Ω 1/2W J	
R8817	NRSA63J-102X	MG R	1kΩ 1/16W J	
R8818	NRSA63J-102X	MG R	1kΩ 1/16W J	
R8819	NRSA63J-272X	MG R	2.7kΩ 1/16W J	
R8826	NRSA63J-0R0X	MG R	0.0Ω 1/16W J	
R8830	NRSA63J-222X	MG R	2.2kΩ 1/16W J	
R8831	NRSA63J-222X	MG R	2.2kΩ 1/16W J	
△ R8901	QRZ0111-474	C R	470kΩ 1W K	

**CAPACITOR**

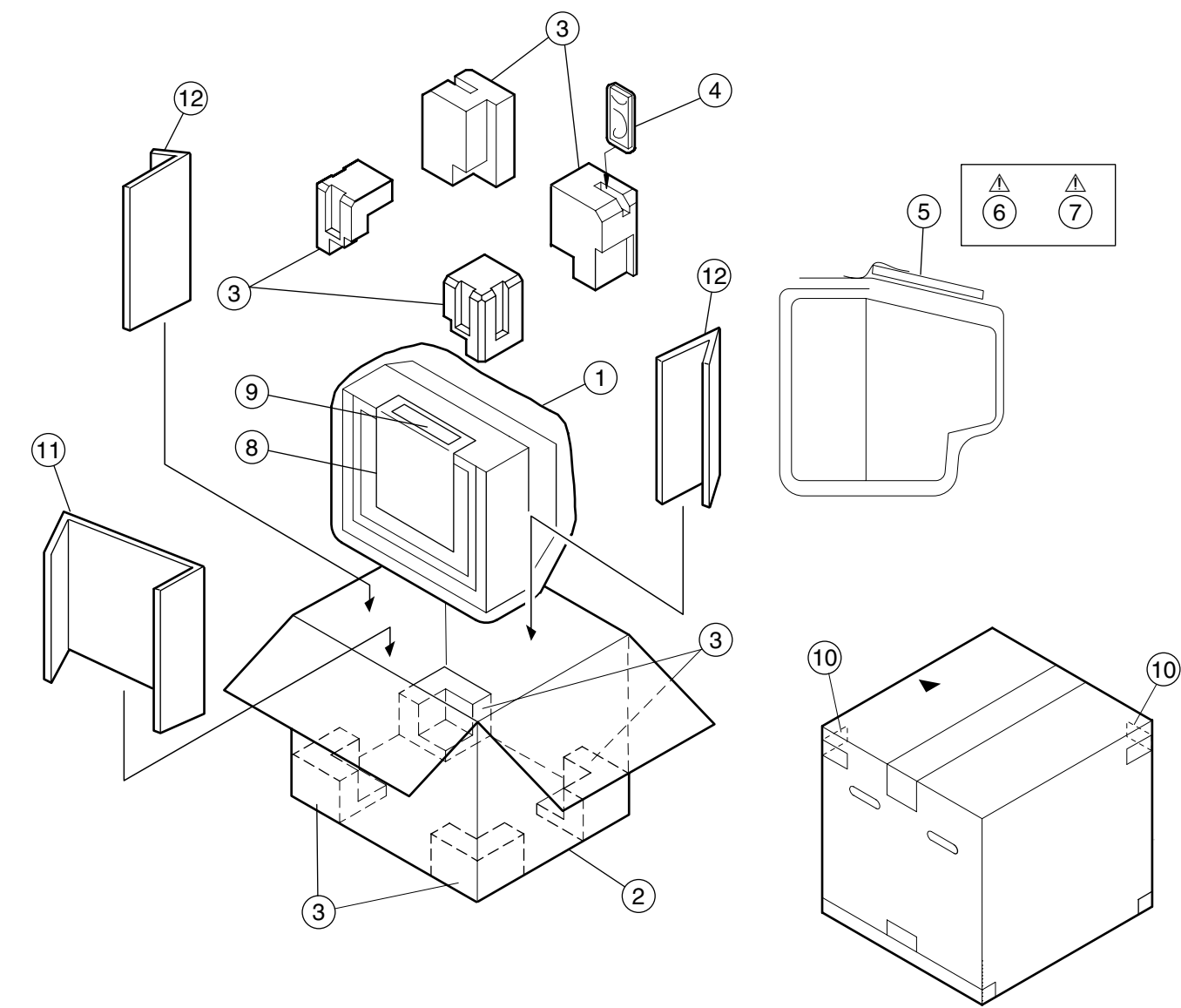
C8481	NCB21EK-224X	C CAP.	0.22μF 25V K	
C8482	NCB21EK-224X	C CAP.	0.22μF 25V K	
C8483	NCB21EK-224X	C CAP.	0.22μF 25V K	
C8484	NCB21EK-224X	C CAP.	0.22μF 25V K	
C8485	QETN1EM-476Z	E CAP.	47μF 25V M	
C8487	QFLC1HJ-103Z	M CAP.	0.01μF 50V J	
C8660	QETM1VM-108	E CAP.	1000μF 35V M	
C8661	QETM1VM-108	E CAP.	1000μF 35V M	
C8801	QETN1HM-106Z	E CAP.	10μF 50V M	
C8802	QETN1CM-107Z	E CAP.	100μF 16V M	
C8803	NCB31CK-104X	C CAP.	0.1μF 16V K	
C8815	QETN1CM-107Z	E CAP.	100μF 16V M	
△ C8901	QFZ9072-224	MM CAP.	0.22μF	

△ Symbol No.	Part No.	Part Name	Description	Local	△ Symbol No.	Part No.	Part Name	Description	Local
<b>COIL</b>									
L8401	QQL244K-820Z	COIL	82 $\mu$ H	K					
<b>DIODE</b>									
D8801	MA111-X	SI. DIODE							
D8802	P1241-04	PHOTO CONDUCTOR							
D8803	SLR-342VR-T16	LED							
<b>TRANSISTOR</b>									
Q8481	2SC2412K/QR/-X	TRANSISTOR							
Q8801	2SA1037AK/QR/-X	TRANSISTOR							
<b>IC</b>									
IC8481	LA6515	I.C.(MONO-ANA)							
IC8801	GP1UM281QK	IR DETECT UNIT							
<b>OTHERS</b>									
△ F8901	CM35921-005-H	CDS HOLDER							
	CM36626-B01-H	LED HOLDER							
	QMF51E2-4R0J4	FUSE							
	CEMG002-001Z	FUSE CLIP							
	QNN0279-003	PIN JACK							
J8302	QNN0279-003	PIN JACK							
J8303	QNN0279-002	PIN JACK							
J8304	QNN0279-001	PIN JACK							
J8801	QNS0155-001	3.5 JACK							
△ LF8901	QQR1356-001	LINE FILTER							
	QSW0619-003Z	TACT SWITCH		CH+					
	QSW0619-003Z	TACT SWITCH		CH-					
	QSW0619-003Z	TACT SWITCH		MENU					
	QSW0619-003Z	TACT SWITCH		TV/VIDEO					
S8804	QSW0619-003Z	TACT SWITCH		VOL+					
S8805	QSW0619-003Z	TACT SWITCH		VOL-					
S8806	QSW0619-003Z	TACT SWITCH		POWER					
△ S8901	QSW0750-001	PUSH SWITCH							
△ VA8901	QAF0052-621	VARISTOR							
	Y8401	MG R	0.0 $\Omega$ 1/16W	J					

## REMOTE CONTROL UNIT PARTS LIST (RM-C1010-1H)

△ Ref. No.	Part No.	Part Name	Description	Local
	25-1168F	BATTERY COVER		

PACKING



PACKING PARTS LIST

△ Ref.No.	Part No.	Part Name	Description	Local
1	CP30967-004-H	POLY BAG		
2	GG10044-043A-H	P CASE		
3	GG10193-001C-H	CUSHION ASSY		
4	RM-C1010-1H	RC HAND UNIT		
5	CP30966-001-H	POLY BAG		
△ 6	LCT1170-001B-H	INST BOOK		
△ 7	QAM0054-001	CONVERSION PLUG		
8	LC30946-001A-H	CRT PROTECTOR		
9	LC30947-002A-H	CAUTION SHEET		
10	GG20025-003A-H	CORNER LABEL	(x2)	
11	GG20011-008A-H	SUPPORT PAD(FRONT)		
12	GG20011-009A-H	SUPPORT PAD(SIDE)	(x2)	

### SERVICE NOTE :

[illegible]